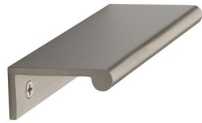


## EPR Edge Pull Cabinet Handle

EPR100-40-SN



Heritage Brass EPR Edge Pull Cabinet Handle 100mm Satin Nickel finish

**Material:**  
Solid Brass

**Finish:**  
Satin Nickel

### Available Finishes



### Available Sizes



### Product Dimensions (All dimensions are in millimeters unless otherwise indicated)

<b>Length</b>	100	<b>Width</b>	40	<b>Height</b>	3
---------------	-----	--------------	----	---------------	---

### About the Finish

#### Satin Nickel

With its honeyed grey tone created by brushed nickel plating on brass, this finish closely matches Stainless Steel but offers a warm and subtle alternative which is popular in traditional and modern décors.

### Useful Information

- The EPR range can be fitted from the back or front of the cabinet.
- If fixed from the back, please allow for a 3.5mm gap between drawers or cut a 3mm recess for flush fitting.

### Box Contains

- 1 Edge Pull
- All fixing screws and fasteners