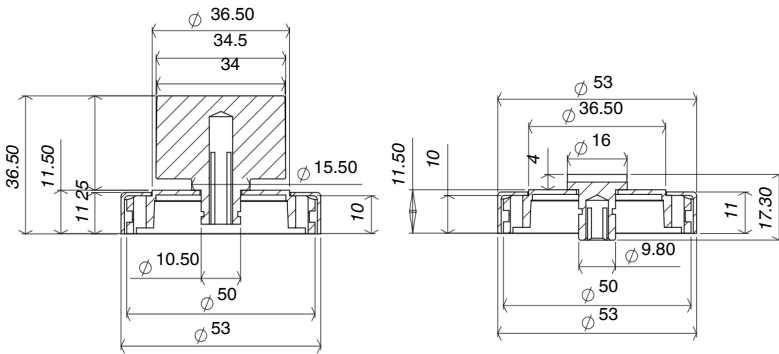
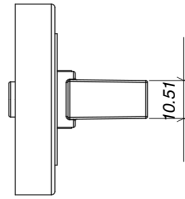
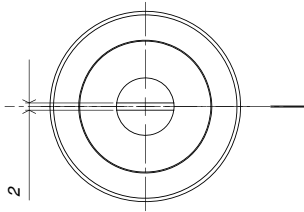
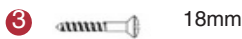


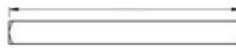
V4035 TURN & RELEASE



② Dimensions:
see the outlines given above



77mm



65mm



FITTING

- 1 Insert the required length of spindle through the lock or deadbolt
- 2 Holding the centre of the turn or release, lift off the outer ring, which reveals the screw fixing holes.
- 3 Take the slotted release button side, position on the outside of the door and push assembly onto the spindle end so the assembly is flush with the doors surface.
- 4 Making sure that the assembly is central, and the spindle is horizontal, mark the screw hole positions, make a pilot hole, and fix into place with woodscrews.
- 5 Repeat for the turn side on the inside of the door, make sure the spindle locates within the turn and test operation.
- 6 On some installations you may need to shorten the spindle slightly by cutting with a hacksaw to allow the turn assembly to sit flush on the door.

Overview

①

Turn & Release illustrated

②

General Dimensions of Turn & Release

③

Supplied with: 4x 18mm screws
1x Spindle 5mm x 77mm
1x Spindle 5mm x 65mm



M Marcus Ltd., Dudley

Product Code

V4035

Material

Solid Brass

Available in all Heritage Brass finishes.

Sizes shown are in mm and approximate. We reserve the right to amend where necessary and without any prior notice.