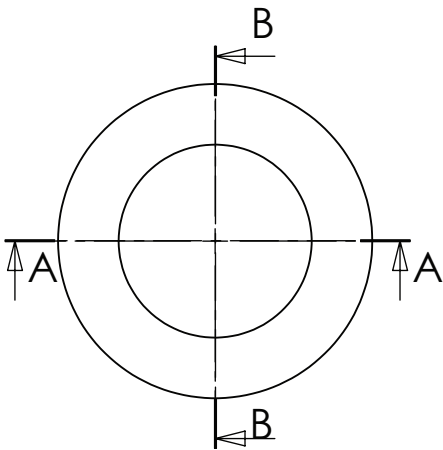
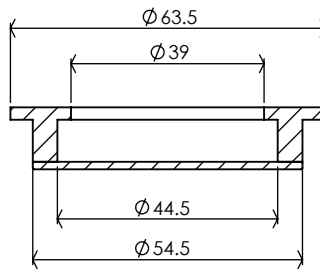
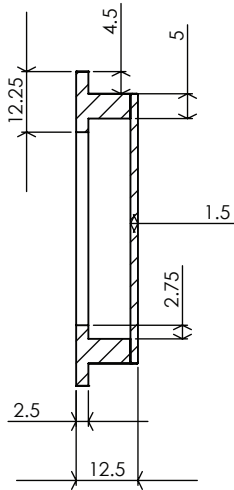


C1835 ROUND FLUSH PULL



2

1



SECTION B-B

SECTION A-A

2 For dimensions of product sizes: see the outlines given above

FINISHES	FITTING
<ul style="list-style-type: none"> ME Matt Bronze finish SB Satin Brass finish PN Polished Nickel finish SN Satin Nickel finish AT Antique Brass finish SC Satin Chrome finish PE Polished Brass finish PC Polished Chrome finish 	<ol style="list-style-type: none"> 1 Position flush pull centrally to determine where to remove required recess for flush pull. This measurement is taken from the back view. 2 Remove just sufficient timber to create a recess for the back of the flush pull and which allows the plate to lie flat onto the surface of the door. 3 The door may dictate where the pull can be fitted, as general guide for fitting, the centre of the pull should be positioned approx. 1000mm from the floor, and this should be a suitable height for most people.

Overview	1 Flush Pull illustrated	2 General Dimensions of Flush Pull(s)
----------	--------------------------	---------------------------------------

M Marcus Ltd., Dudley

Product Code	Material
C1835	Solid Brass

Sizes shown are in mm and approximate. We reserve the right to amend where necessary and without any prior notice.